



# BEFORE & AFTER SCHOOL CARE

In partnership with Memphis-Shelby County Schools, YMCA Before & After School Care provides a safe, supportive environment with a focus on enrichment activities, academics, and fun!



HEALTHY  
SNACK



HOMWORK  
HELP



PHYSICAL  
ACTIVITY



INTEREST  
CENTERS



ENRICHMENT  
PROGRAMMING



ACADEMIC  
ALIGNMENT



# REGISTER ONLINE

[ymcamemphis.org](http://ymcamemphis.org)

# OUR PROGRAM

Register Online: [ymcamemphis.org/mscs](http://ymcamemphis.org/mscs)

## PROGRAM FEES

**Before School Care** – \$30 per child weekly

**After Care** – \$50 per child weekly

**Before & After School Care** – \$65 per child weekly

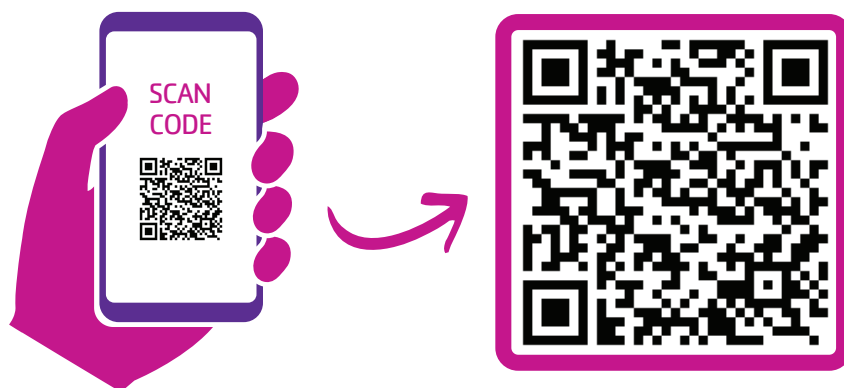
**Annual Registration Fee** – \$25 per child\*

\*Registration Fee is waived for YMCA Members.

Fee assistance is available. Visit: [ymcamemphis.org](http://ymcamemphis.org) to apply online.

## HOW TO REGISTER:

Registration can be found on our website at [www.ymcamemphis.org/mscs](http://www.ymcamemphis.org/mscs). Scan the QR code below to get started!



### CURRICULUM

THE WORLD  
AROUND ME



LITERACY  
& READING



SCIENCE  
ACTION CLUB



GUEST SPEAKERS  
& EVENTS



CREATIVE  
EXPRESSION



HOMEWORK  
& TUTORING



T.E.A.M.  
FOCUS



EXPLORATION  
STATION



FUEL &  
FUN!



SAFETY  
AROUND WATER



MEET UP,  
BUDDY UP!



UPSTANDERS  
UNITED



## FIND IT ONLINE

[ymcamemphis.org](http://ymcamemphis.org)

Find **Program Information**,  
**Fill Forms**, **Read FAQs** and  
more on our website!



INFO &  
REGISTRATION



FILL  
FORMS



READ  
FAQs



FOR YOUTH DEVELOPMENT®  
FOR HEALTHY LIVING  
FOR SOCIAL RESPONSIBILITY

YMCA OF MEMPHIS & THE MID-SOUTH  
7171 Goodlett Farms Pkwy, Cordova, TN 38016  
P: 901.766.7677 W: [ymcamemphis.org](http://ymcamemphis.org)